

2 0 2 0
EUROPE

ENGLISH

ACRYLIC SOLID SURFACE

WIDE MATERIAL
FOR WIDE IDEAS



AVONITE®

**WIDE AND
FLEXIBLE.
THE SOLUTION
TO ACCOMPLISH
YOUR BOLDEST
PROJECTS.**

AVONITE® is a solid surface material composed of 63% alumina trihydrate, 35% acrylic and 2% pigments and binders. It is produced at the Aristech Surfaces LLC plant, in Florence (KY), USA, one of the most flexible and scalable production lines in the world. Aristech Surfaces LLC relies on its experience and expertise to supply a reliable Solid Surface material.

COLOURFUL

Complimented by a range of colours specially selected to serve the European market, AVONITE® offers tones and textures suited to the creation of harmonious spaces. Homogeneous throughout its thickness, the material allows for careful cutouts, as well as the sanding of its surface, capable of giving it a lustrous sheen at all times.



THERMOFORMABLE

AVONITE® sheets become supple and malleable when exposed to the heat of special ovens. One thing is certain: with its organic shapes and rounded corners, the material's gentle curves provide comfort and warmth to any interior design.



TRANSLUCENT

Whether through the even and glossy translucence of Ice White or the creation of motifs trimmed in lighter colours, AVONITE® offers beautiful ways to treat light.



MONOLITHIC

AVONITE® adhesives are colour matched exactly to ensure seamless joints. Now you can create monolithic installations and counters stretching as far as the eye can see!



ONE OF THE MOST ADVANCED PRODUCTION TECHNOLOGIES

The ability of our double belt production lines to create a multi-stage system, incorporating controlled heating, cooling and tempering – all within one press – enables the development of highly efficient processing solutions.

MORE DETAILS **PAGE 12**

RIGHT SIZE PROGRAMME

OUR STANDARD FORMATS

AVONITE®'s **RIGHT SIZE** Programme refers to 18 formats of sheets with NO surcharges per m².

With perfectly reasonable minimum order sizes, the **RIGHT SIZE** Programme lets you acquire sheets of all sizes.

MORE DETAILS **PAGE 14**





OUR COMMITMENT TO ECOLOGY

We see sustainability as more than just offering products with recycled content and regulatory compliance. It means having a responsibility to touch and improve lives by making a positive impact on others, now and for the future.

MORE DETAILS **PAGE 16**



The exterior facade of this luxurious villa in Ibiza was created with AVONITE®, as well as the windows' and doors' frames, the swimming pool outline, the columns of the terrace and the surface of the outer wall.

Private Villa Can Furnet
Ibiza, Spain
AVONITE® Snowfall 8090



Designer: Laurence Sonck
Fabricator: M² IBIZA CONSTRUCT SL
Photographer: Arsen Mikitov



EXTERIOR

A NETWORK OF EXPERTS

We have a network of Solid Surface experts experienced in building facades, using our ETA certified AVONITE®, which you can aspire to use on the most ambitious projects.

The **RIGHT SIZE** Programme also offers a competitive product portfolio that is perfectly suited to the creation of exterior façades.

For outdoor use, AVONITE® recommends 7 colours (see p .18), for which we predict a UV resistance under $\Delta E 5$ and gloss loss of less than 40% for a matt finish.

Location: Béziers, France
Photographer: Hugo Da Costa
Fabricator: LCCA
Architect: Olivier Marty
AVONITE® Super White 8026



In the offices of the German company Schlüter Systems, translucent motifs were milled in the material to create a stunning light effect. AVONITE® was also used as a surface for the cloakroom furniture.

Schlüter Systems KG
Iserlohn, Germany
AVONITE® Polaris 8256



COMMERCIAL

AVONITE® IS ABSOLUTELY VERSATILE

It can be found on both the countertops and walls of ultra-clean labs and the overworked reception desks at hotels.

THAT'S NOT ALL

AVONITE® is also used to produce flawless furniture for shops and museums.



AVONITE® Polaris 8256

HYGIENIC

The material's non-porous properties and the seamless assembly of furniture made of AVONITE® makes it extremely easy to clean. Its thermoforming capacity also allows for the creation of rounded backsplashes on lab benches, kitchen counters and restaurant furniture, which eliminates those hard to reach places.



DURABLE

AVONITE® is resistant to common household products and is easy to repair, thanks to the after sale servicing by one of our local partners. With its 15-year warranty on 12, 9 and 6 mm thicknesses and 1 year warranty on the 3 mm thickness, AVONITE® will not fail you after your project is complete.





Design/fabricator/photo: Carpintek

AVONITE® Snowfall 8090

RESIDENTIAL

Used for kitchen islands, vanity tops and shower bases in bathrooms, or modern furnishings, AVONITE® fits harmoniously into private residences.

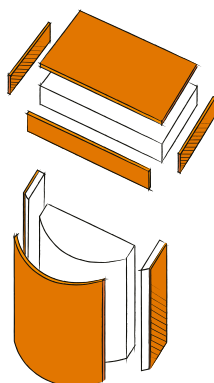


ADVANC3®

**ARE YOU LOOKING FOR AN ALTERNATIVE
TO LAMINATE AS A FURNITURE COVERING?**

AVONITE® IS A GREAT SOLUTION!

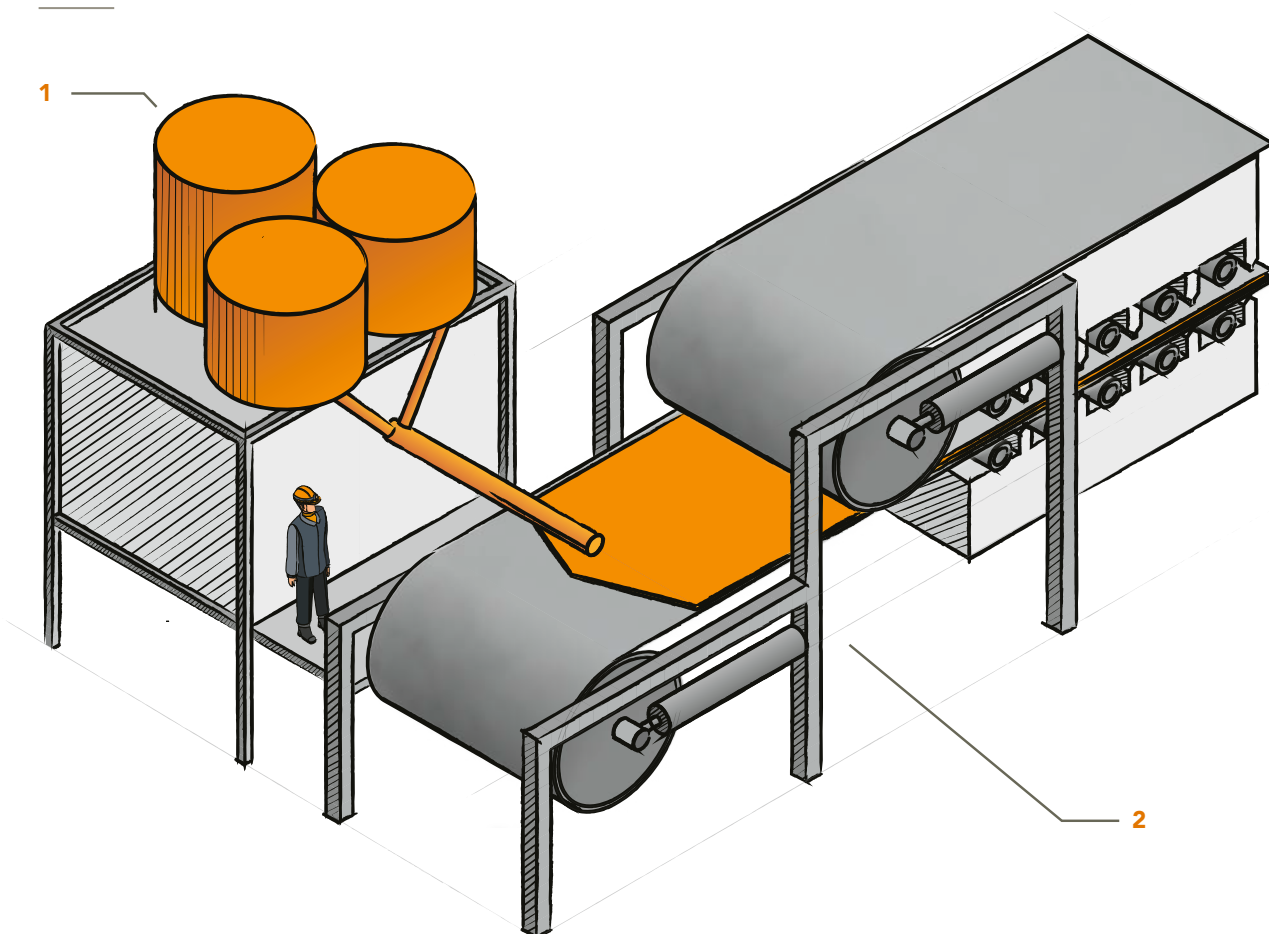
With its sheets just 3 mm thick, AVONITE® ADVANC3® offers all the properties and aesthetics of a Solid Surface at unbeatable prices. ADVANC3® can only be used on installations with no heat source at proximity.



ADVANCE®

ONE OF THE MOST ADVANCED PRODUCTION TECHNOLOGIES

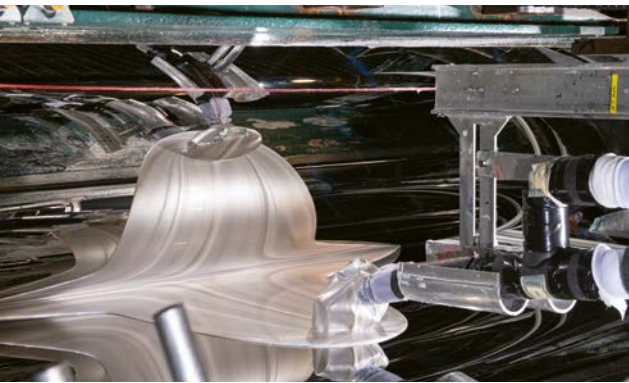
THE ABILITY OF OUR DOUBLE BELT PRODUCTION LINES TO CREATE A MULTI-STAGE SYSTEM, INCORPORATING CONTROLLED HEATING, COOLING AND TEMPERING – ALL WITHIN ONE PRESS – ENABLES THE DEVELOPMENT OF HIGHLY EFFICIENT PROCESSING SOLUTIONS.



1 The manufacturing process begins with mixing of the constituent materials (Methyl Methacrylate, solution of pre-polymerised methyl methacrylate, Alumina Trihydrate, pigments, catalysts, and chips, if needed) in a batch vessel. The use of a batch vessel for mixing all the ingredients ensures that a well-mixed homogeneous mixture is delivered to the double-belt continuous cast process.

2 The compound product is then cast between the belts. Through the application of heat and pressure, the product is pressed, calibrated and cooled down under pressure. This system enables very high pressure to be delivered uniformly.

Often associated with a continuous cast production line, a double belt press typically includes top and bottom belts with heating elements and pressure mechanisms that transfer heat and pressure to the products between the belts. One of the major advantages to this machine is its ability to continuously hold product under heat for and cool to set good strength. Product is held securely throughout complete process.



BENEFITS OF OUR TECHNOLOGY

VERSATILE ADJUSTABLE PRODUCT WIDTH

The use of a double-belt continuous cast process allows the adjustment of the product width to any size between 686 mm and 1 524 mm. Thanks to this highly efficient process, Aristech Surfaces LLC offers 3 different widths at no surcharge cost per m² and any other width between 686 mm and 1524 mm at a highly competitive price.

IMPECCABLE COLOUR CONSISTENCY

Continuous-casting optimises the mixing of ingredients to offer a perfect colour consistency not only within the same batch but even within different production batches ($\Delta E < 1$).

NARROW THICKNESS TOLERANCE

The thickness of the product – taking into account the shrinking effect – is easily adjusted by means of a high precision gear and spindle system that sets the gap between upper and lower belt. Consequence? AVONITE®'s tolerance on the thickness across a sheet is the lowest among any other Acrylic Solid Surface. Precision in manufacturing is key for the most ambitious projects and AVONITE® is meant to be part of them.

ECO-FRIENDLY MANUFACTURING

Realised without solvent and from a 100% monomer solution, the bulk polymerization of methyl methacrylate produced in the double-belt manufacturing process contributes to reduce the impact of Volatile Organic Compounds on environment. That's how AVONITE® has been classified by SCS Global Services at the most demanding level "Indoor Advantage Gold" for its capacity to preserve indoor air quality. And that's not all: with its symmetric heating and cooling system, this highly efficient system contributes to save energy. Finally, continuous-casting improves the yield and reduces scrap for an optimised usage of resources.

OUR RIGHT SIZE PROGRAMME



OUR 18 STANDARD FORMATS

AVONITE®'s **RIGHT SIZE** Programme refers to 18 formats of sheets **with NO surcharges per m²**.

- Thickness: 12 mm*.
- Lengths: 2438 mm | 3048 mm | 3658 mm.
- Widths: 762 mm | 914 mm | 1067 mm | 1219 mm | 1372 mm | 1524 mm.

* The **RIGHT SIZE** Programme applies to any standard AVONITE Surfaces® colour in 12 mm thickness, with the exception of 8064 Ice White, 8298 Ice Blue, 8901 Altitude, 8903 Torrent, 8904 Morning Mist, 8905 Summit, 8908 Calm and 8909 Unwind. Please contact your local distributor to get the list. Lead time and minimum order quantity will apply.

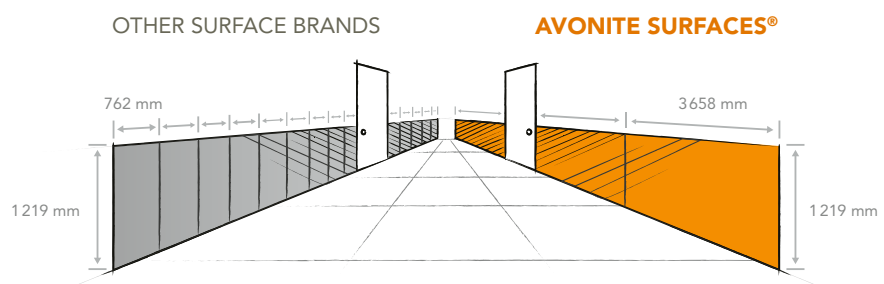
DO YOU HAVE A SMALL PROJECT THAT DOES NOT MEET THE ORDER MINIMUM?

We have not forgotten you. A large selection of **RIGHT SIZE** formats is available in our European stock, in our most popular colour: **SNOWFALL**. See P20.

USING THE RIGHT FORMAT OF SHEETS IS THE RIGHT CHOICE FOR CONSUMING LESS.

The use of large sheets reduces the number of joints required. Fewer joints mean less adhesive, less work and therefore less cost to the end user.

The choice of an optimal format reduces scrap. Less scrap means taking a step to help the environment.



WIDER SHEETS = TIME SAVED = BIG SAVINGS



Location: Hanau City Library

Photographer: Julia Schambeck

Fabricator: Roskopf + Partner AG

Architect: Schrammel Architekten Stadtplaner Part GmbH

THE ULTIMATE FLEXIBILITY

You can customise the dimensions of your sheets.
From the simplest format to the most unusual designs, Aristech
Surfaces LLC offers you an infinitely wide array of options.

For more information on the requirements, consult your local distributor.

2 134 x 686 mm
SHEETS' MINIMUM DIMENSIONS

THICKNESS

3 mm

6 mm

9 mm

12 mm

19 mm

5 182 x 1 524 mm
SHEETS' MAXIMUM DIMENSIONS



OUR COMMITMENT TO ECOLOGY

WE SEE SUSTAINABILITY AS MORE THAN JUST OFFERING PRODUCTS WITH RECYCLED CONTENT AND REGULATORY COMPLIANCE – IT MEANS HAVING A RESPONSIBILITY TO TOUCH AND IMPROVE LIVES BY MAKING A POSITIVE IMPACT ON OTHERS, NOW AND FOR THE FUTURE.

REUSE AND RECYCLE

At Aristech Surfaces LLC, we continually strive to improve our energy and water efficiency, landfill diversion, and air quality, using performance metrics we measure and report. Recent and ongoing environmental initiatives include conversion to LED lighting at our plants and offices, proactive recycling of office and industrial materials, high-efficiency motor upgrades to machine drives, industrial water filtration and recycling systems and thermal oxidizing units with heat recovery to reduce VOC emissions.

Finally, Aristech Surfaces LLC transport partner for Europe guarantees recycling of waste water, uses solar energy in the warehouse and trucks that run on gas.



INDOOR ENVIRONMENTAL QUALITY

AVONITE® has been awarded Indoor Advantage Gold by SCS Global Services and earned a score of A+ for the material's adherence to French regulations governing the emission of volatile organic compounds.

REDUCING WASTE

The **RIGHT SIZE** Programme is another key component of our approach to sustainable design. The possibility of choosing the best format for your projects optimizes the material consumption to suit your needs.

ENERGY CONSERVATION

Historically, it's not a coincidence if we chose to work with a double-belt continuous cast technology. Equipped with a symmetric heating and cooling system, solvent free and allowing to reduce the waste to the lowest level, this manufacturing technique is one of the eco-friendliest.

Our recent efforts to conserve energy include updating boiler controls and eliminating an inert gas generator at our Belen, New Mexico facility; installing a new nitrogen system, which improved energy efficiency and reduced emissions.

Our Florence, Kentucky site was re-lamped with LED technology, significantly reducing electrical consumption.

Certified leader:



OUR COLOUR SELECTION

Whether the simple elegance of Altitude, the depth of the Summit, the inimitable texture of Sandstorm, the purity of Ice White or the vitality of Mango, AVONITE® offers a colour range balanced between the latest trends and timeless classics.

Depending on the climate, the orientation and the application, AVONITE® recommends 7 colours for outdoor use (highlighted with a Δ hereunder). We predict a UV resistance under ΔE 5 and a gloss loss of less than 40% for a matt finish.

PRICE GROUP 0

 Δ 

8090 Snowfall

PRICE GROUP 1

 Δ 

8256 Polaris



8066 Porcelain

 Δ 

8026 Super White

 Δ 

8016 White

 Δ 

8106 Ivory

 Δ 

8024 Crème

 Δ 

8010 Bone

PRICE GROUP 2



8292 Cloud



8231 Dove Grey



8280 Smoke



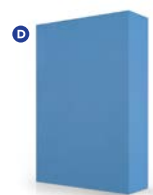
8272 Café au Lait



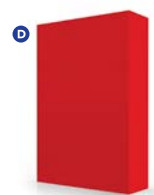
8268 Mango



8258 Antique Blue



8284 Azul



8248 Fuego

PRICE GROUP 4



8206 Alpine Shimmer



7749 Mellow



7817 Harland



7856 Dove Shimmer



7830 Bronze



7820 Star Shine



9024 Night Shadow

PRICE GROUP 5



7848 Snow Mist



9173 Riverside



9017 Savor



7790 Galactic Ice



9119 Nordic



9012 Aspen



4310 Coastline

7842
New Concrete

9010 Stormy Gray



4312 Alaskan Stone



7849 Industrial



9117 Kokoura



9015 Artica



7810 Malt



9036 Sandstorm



9037 High Desert

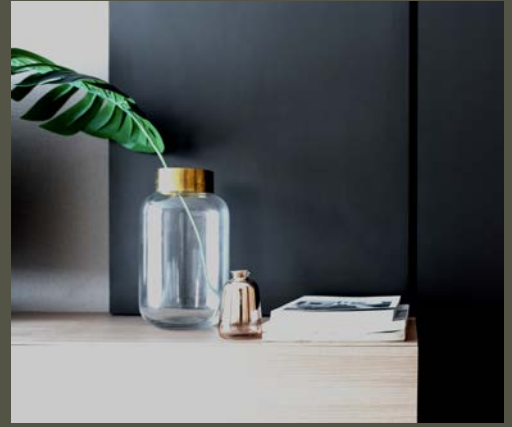
7857
Vintage Concrete

7738 Storm

NEW! ENRICHED COLOUR TECHNOLOGY™

Aristech Surfaces LLC has created a new and innovative AVONITE® formulation: Enriched Colour Technology™. This product delivers more intense colour and its improved mechanical properties make it more scratch resistant*. Enriched Colour Technology™ is available in the Eclipse colour.

* The colours produced with this technology are still more delicate than less pigmented colours and remain a D-category product.



**OUR BUZZWORD IS FLEXIBILITY.
IN JUST TWO WEEKS, WE WILL SEND YOU A SAMPLE,
INFORMATION ON THE MINIMUM ORDER QUANTITY
AND A QUOTE FOR YOUR PERSONALISED CUSTOM
COLOUR. WORKING WITH US IS AS SIMPLE AS THAT.**

PRICE GROUP 3



8064 Ice White

8298 Ice Blue

8240 Eclipse

HAVE A PROJECT IN PROGRESS?

Request the free colour samples of your choice on www.aristechsurfaces.com/avonite or ask for a visit from an AVONITE® expert.

PRICE GROUP 6



7728 Relic

7502 Avalanche

7501 Moon Crystal

7746 Cloud Burst

9125 Black Coral

7509 Seaside

7724 Creek Rock

7747 Stony Peak

9137 Casablanca



4330 Honey Crunch 7710 Gulf Coast

9144 Palermo

7503
Morning Tundra

7506 River's Edge

7735 Dark Roast

PRICE GROUP 7



8908 Calm

8901 Altitude

8909 Unwind

8904 Morning Mist

8905 Summit

8903 Torrent

The tones shown on this page may differ slightly from the actual colours. To be safe, make your choice based on samples.

△ Recommended colours for outdoor use.

D These décors are heavily pigmented colours, and are prone to show scratches, dust, haziness, and ordinary wear and tear more easily than lighter textured décors. Therefore, these décors are not recommended for use in residential and commercial applications that will be subject to heavy use, and/or, horizontal application use, and will not be covered under the AVONITE® warranty in relation to claims for scratches of ordinary wear and tear.

♻ Contains Recycled Content
Colours marked with this acronym include recycled material and may therefore qualify for additional credits as part of the building's LEED accreditation.

TECHNICAL INFORMATION

THAT'S NOT ALL...

AVONITE®'s **RIGHT SIZE** Programme offers 18 formats of sheets in ALL our colours*, subject to a minimum order quantity and a production lead time of six weeks.

To receive a list of our formats and our terms of sale, or for any additional information, please contact us on

WWW.ARISTECHSURFACES.COM/AVONITE

*With the exception of 8064 Ice White, 8298 Ice Blue, 8901 Altitude, 8903 Torrent, 8904 Morning Mist, 8905 Summit, 8908 Calm and 8909 Unwind.

SHEET DIMENSIONS

AVONITE®'s flexibility is based on the 9 formats of sheets that we keep in stock at our European depot.

THICKNESS (mm)	DIMENSIONS (mm)	AVAILABLE COLOURS
3	W. 762 x L. 3658	8091 Snowfall
	W. 1372 x L. 3048	8091 Snowfall
6	W. 762 x L. 3658	8090 Snowfall
9	W. 762 x L. 3658	8090 Snowfall
	W. 1370 x L. 3658	8090 Snowfall
12	W. 762 x L. 3658	All colours*
	W. 914 x L. 3658	8901 Altitude 8903 Torrent 8904 Morning Mist 8905 Summit 8908 Calm 8909 Unwind
	W. 1372 x L. 3658	8064 Ice White 8298 Ice Blue 8090 Snowfall 8256 Polaris
	W. 1524 x L. 3658	8090 Snowfall

Designers for the new university hospital in Lausanne, Switzerland, has chosen AVONITE® for the surface of the benches in the public spaces.
AVONITE® Ivory 8106

Designer: Belandscape Switzerland
Fabricator: Roskopf + Partner AG
Photo: Laurent Essig / David Lorient



CHEMICAL DATASHEET

To determine stain and chemical resistance, chemical reagents are placed on the surface for 16 hours*. After the 16 hours period, reagents are removed.

STAIN RESISTANCE

Stain resistance looks at the effect below the surface. The following reagents show no lasting effects on the surface of AVONITE® sheets when tested to the ISFA 2-01 cleanability/stain resistance standard.

- | | | | | |
|---------------------------|----------------------------------|-----------------------------------|-------------------------|----------------------------|
| • Acetic Acid (10%) | • Dishwasher Detergent (Cascade) | • Hydrogen Peroxide Solution, 3 % | • Mineral Oil | • Toluene |
| • Acetone | • Dishwashing Liquid | • Instant Coff | • Naphtha | • Tomato Juice |
| • B-4 Body Conditioner | • Distilled Water | • Isopropyl Alcohol (90%) | • Olive Oil | • Trisodium Phosphate (5%) |
| • Ball Point Ink Pen | • Ethanol | • Lemon Juice | • Pencil Lead | • Urea (6%) |
| • Black Paste Shoe Polish | • Ethyl Alcohol (90%) | • Lye Solution (1-2%) | • Permanent Marker | • Vegetable Oil |
| • Bleach (Household Type) | • Finger Nail Polish Remover | • Mercurochrome (2%) | • Pig Blood | • Vinegar |
| • Butyl Acetate | • Gasoline | • Methanol | • Pine Oil | • Wax Crayon |
| • Butyl Alcohol | • Household bleach | • Methyl Acetate | • Povidone Iodine (10%) | • Wet Pekoe Tea Bag |
| • Butyl Ether | • Household Ammonia | • Methyl Ethyl Ketone | • Yellow Mustard | • Wine |
| • Catsup | • Hydrogen Peroxide | • Methyl Orange (1%) | • Soy Sauce | • Xylene |
| • Citric Acid (10%) | | • Methyl Red (1%) | • Sugar (sucrose) | • Zinc Chloride (10%) |
| • Cupra Ammonia | | | | |

CHEMICAL RESISTANCE

Chemical resistance is a measure of visible surface changes. The following reagents show no lasting effects on the surface of AVONITE® Acrylic Solid Surface sheets.

- | | | | | |
|--|--------------------------------|-----------------------------------|------------------------------------|----------------------------|
| • Acetic Acid (10%) | • Bleach (Household Type) | • Nail Polish Remover | • Napthalene (Naptha) | • Sodium Hypochlorite (5%) |
| • Acetone | • Blood | • Gasoline | • Nitric Acid (6%) | • Sodium Sulfate (10%) |
| • Acridine Orange | • Butyl Acetate | • Hexane | • Olive Oil | • Soy Sauce |
| • AG Eosin Blue (5%) | • Butyl Alcohol | • Household Soaps | • Pencil Lead | • Sugar (Sucrose) |
| • AG Gentian Violet | • Butyl Ether | • Hydrogen Peroxide | • Perchloric Acid | • Tea |
| • Ammonia (10%) | • Catsup | • Hydrogen Peroxide Solution (3%) | • Permanent Marker Ink | • Toluene |
| • Ammonium Hydroxide (28%) | • Citric Acid (10%) | • Instant Coffee | • Picric Acid | • Tomato Juice |
| • Amyl Acetate | • Coffee | • Isopropyl Alcohol (90%) | • Pig Blood | • Trisodium Phosphate (5%) |
| • Amyl Alcohol | • Cupra Ammonia | • Lemon Juice | • Pine Oil | • Urea (6%) |
| • Aromatic Ammonia | • Dishwashing Liquid (Cascade) | • Lye Solution (1-2%) | • Povidone Iodine (10%) | • Uric Acid |
| • B-4 Body Conditioner | • Dishwashing Liquid (Dawn) | • Mercurochrome (2%) | • Yellow Mustard | • Urine |
| • Ball Point Pen | • Distilled Water | • Methanol | • Salt (Sodium Chloride) | • Vegetable Oil |
| • Betadine Solution | • Equalizing Accelerator | • Methyl Acetate | • Silica Dental Cement (liquid) | • Vinegar |
| • Bite Registration Accelerator (2% Eugenol) | • Ethanol | • Methyl Ethyl Ketone | • Silver Nitrate (10%) | • Wax Crayon |
| • Bite Registration Base | • Ethyl Acetate | • Methyl Orange (1%) | • Soapless Detergents | • Wet Pekoe Tea Bag |
| • Black Paste Shoe Polish | • Ethyl Alcohol (90%) | • Methyl Red (1%) | • Sodium Bisulfate | • Wine |
| | | • Mineral Oil | • Sodium Hydroxide Solution (<10%) | • Xylene |
| | | • Naphtha | | • Zinc Chloride (10%) |

The following reagents should not come into contact with AVONITE® sheets for long periods of time. These reagents may cause surface changes on the sheets that are more difficult to remove:

- | | |
|---------------------------------|------------------------------------|
| • Bite Registration Mix (50/50) | • Nail Polish |
| • Dry-Bond Dental Adhesive | • Nitric Acid (>25%) |
| • Eosine Methylene Blue | • Sodium Hydroxide Solution (>25%) |
| • Hydrochloric Acid (>20%) | • Sulfuric Acid (>25%) |

*Although the 16 hours period is standard test procedure, it is recommended to remove chemicals as soon as possible, to prevent damage to the surface.

PHYSICAL PROPERTIES

AVONITE® ACRYLIC SOLID SURFACING SHEETS 12 mm

Aristech Surfaces LLC AVONITE® Acrylic Solid Surface “Specialty Blend Solid Surface” sheet products in a variety of attractive colours provide exceptionally weatherable, strong, non-porous, scratch and stain resistant material for architectural designs and utilitarian surfaces.

PROPERTY	UNITS	SOLIDS	SMALL PARTICULATE	MEDIUM PARTICULATE	LARGE PARTICULATE	AVONITE® 8064 ICE WHITE 8298 ICE BLUE	TEST METHOD
----------	-------	--------	-------------------	--------------------	-------------------	---	-------------

GENERAL

Nominal thickness	mm	12	12	12	12	12	–
Density	g/cm³	1.73	1.60	1.62	1.63	1.60	ASTM D 792
Water absorption	%	0.04	0.05	0.05	0.05	0.05	ASTM D 570

MECHANICAL

Tensile strength	MPa	31.1	31.1	28.3	25.2	30.7	ASTM D 638
Tensile modulus	MPa	10,514	7,142	8,411	8,204	8,650	ASTM D 638
Tensile elongation	%	0.40	1.00	0.55	0.45	2.20	ASTM D 638
Flexural strength	MPa	64.1	55.2	49.3	47.2	58.3	ASTM D 790
Flexural modulus	MPa	8,687	7,329	7,240	8,067	7,010	ASTM D 790
Barcol hardness	–	63	58	59	60	55	ASTM D 2583
Rockwell hardness (m scale)	–	94	94	93	93	92	ASTM D 785
Charpy impact	J/m	58.7	58.7	45.3	42.7	59.8	ASTM D 6110
Ball impact (227g ball, no failure)	cm	>380	305	290	215	>380	NEMA LD3-3.8

THERMAL

Dt _{ul} @ 1.82 Mpa	°C	102	93	93	92	100	ASTM D 648
Coefficient of thermal expansion	cm/cm/°C	3.76x10 ⁻⁵	4.43x10 ⁻⁵	4.43x10 ⁻⁵	4.43x10 ⁻⁵	–	ASTM D 696
Boiling water resistance	–	No effect	No effect	No effect	No effect	No effect	ISFA 2-01
High temperature resistance	–	No effect	No effect	No effect	No effect	No effect	ISFA 2-01
Reaction to fire	–	Class A	Class A	Class A	Class A	Class B	ASTM E 84
Combustion toxicity	–	98	67	67	67	98	Pittsburgh Protocol
Total Volatile Organic Compounds	µg/m²/hr	69.1	69.1	69.1	69.1	69.1	ASTM D 5116

SURFACE

Consistency of colour (same sheet)	–	Passes	Passes	Passes	Passes	Passes	ISFA 2-01
Light resistance	–	No effect	No effect	No effect	No effect	No effect	ISFA 2-01
Cleanability/Stain resistance	–	Passes	Passes	Passes	Passes	Passes	NEMA LD3-3.4
Stain resistance	–	Passes	Passes	Passes	Passes	Passes	ANZI/ICPA SS-1
Bacterial resistance	–	No growth	No growth	No growth	No growth	No growth	ASTM G 22
Fungi resistance	–	No growth	No growth	No growth	No growth	No growth	ASTM G 21
Food zone use	–	Approved	Approved	Approved	Approved	Approved	NSF 51

NEW!

AVONITE® SHAPED ACRYLIC ELEMENTS COLLECTION

Aristech Surfaces LLC offers an extensive range of 12 sinks, 45 washbasins, 2 bathtubs and 4 shower trays for all types of commercial and residential use. These come in a range of shapes: oval, square, rectangular and curved. Featuring classic, timeless models for facilities with enduring style, the collection embodies simple, clean décor.



Certified leader:



European Head Office
ARISTECH SURFACES LLC
info.europe@aristechsurfaces.com

Global Headquarters
ARISTECH SURFACES LLC
7350 Empire Drive
Florence KY 41042
USA
T +1.800.354.9858

Find your closest distributor on
WWW.ARISTECHSURFACES.COM/AVONITE



AVONITE® and Advanc3® are registered trademarks of Aristech Surfaces LLC. All other trademarks and product names are trademarks or registered trademarks of their respective rights owners. The information contained in this brochure is intended to be for information only and can be amended at any time without prior notification © 2020 Aristech Surfaces LLC. All rights reserved.